

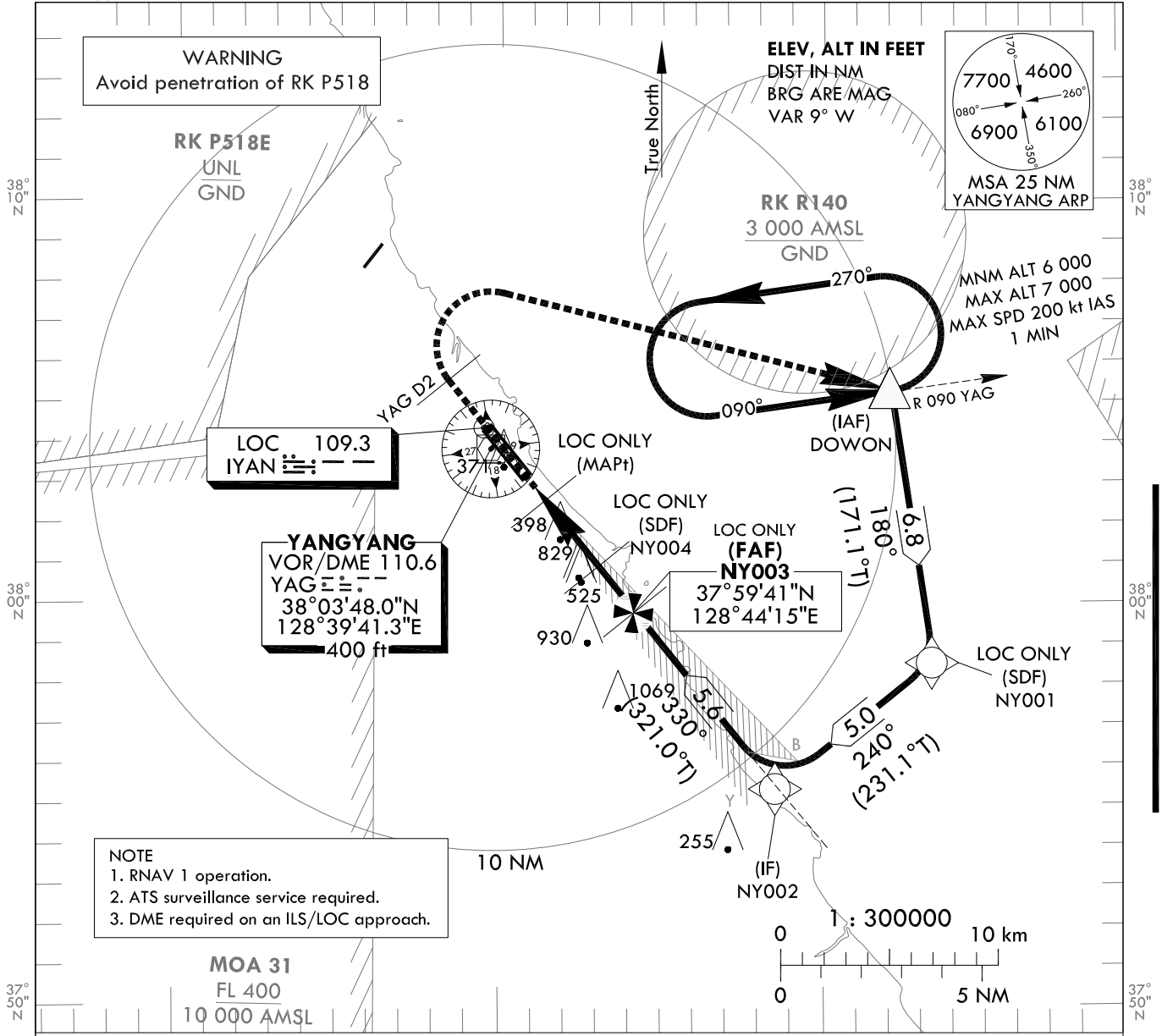
**INSTRUMENT
APPROACH
CHART - ICAO**

AERODROME ELEV 241 ft
HEIGHTS RELATED TO
THR RWY 33 - ELEV 227 ft

GANGNEUNG APP 124.6
YANGYANG TWR 118.85
124.375

YANGYANG/Intl(RKNY)
ILS Z or LOC Z RWY 33

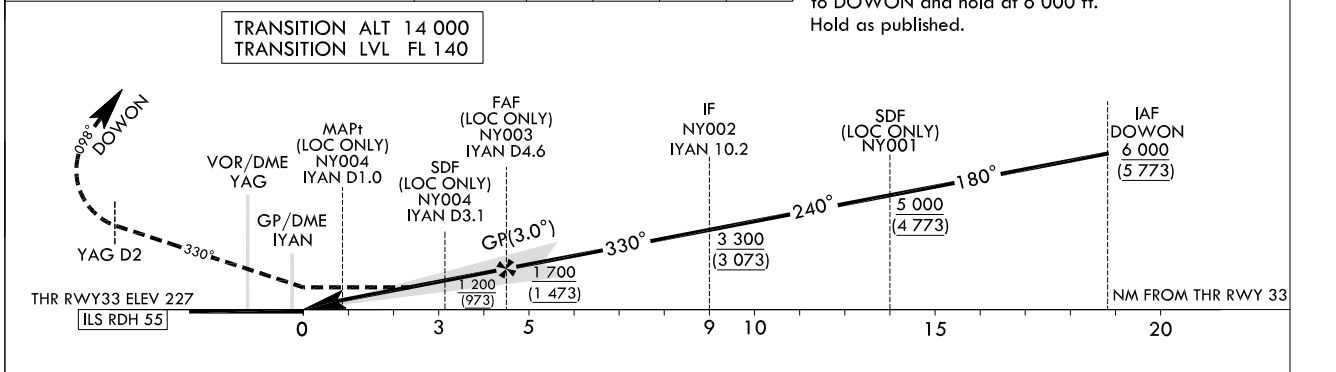
Note : Approach and circle-to-land under ICAO Flight Procedures.



128°30' N 128°40' N 128°50' N

RECOMMENDED PROFILE(LOC ONLY)	DME YAG	4	3	2	1.4
Final Approach Gradient 5.68%(344.8 ft/NM) to SDF, 5.12%(311.2 ft/NM to THR)	ALT(HGT)	1 526 (1 300)	1 203 (976)	879 (653)	658 (459)

MISSED APPROACH
Climb straight ahead until YAG D2, then turn right direct to DOWON and hold at 6 000 ft.
Hold as published.



CATEGORY	DA(H)/MDA(H)	A				B				C				D								
		RVR 550 m, VIS 800 m				1 200 m				1 500 m				2 200 m								
STA	CAT 1	FULL	427													Rate of descent	V/V fpm	318	478	637	796	955
		ALS INOP	(200)																			
STA	LOC	FULL	700													* Timing Not authorized for defining MAPt. * Circling Not authorized west of RWY 15-33, area on between R 150 and R 315 YAG and area beyond 6 DME of between R 315 and R 360 YAG.						
		ALS INOP	(473)																			
Circling			700(460)	740(500)	1 160(920)	1 180(940)	2 400 m	2 800 m	4 300 m	4 600 m												

Change : Amended ILS plan view symbol.

YANGYANG/Intl(RKNY)

ILS Z or LOC Z RWY 33

AERONAUTICAL DATA TABULATION

ILS/LOC Z Approach to RWY 33 from DOWON		
	Fix/Point	Coordinates
	DOWON(IAF)	38°05'14.5"N 128°52'13.8"E
	NY001(SDF) BRG 239.02°	37°58'31.2"N 128°53'33.6"E
	NY002(IF) BRG 329.01° / 10.15NM IYAN	37°55'22.3"N 128°48'38.8"E
	NY003(FAF) BRG 329.52° / 4.55NM IYAN	37°59'40.6"N 128°44'14.9"E
	NY004(SDF LOC only) BRG 329.52° / 3.10NM IYAN	38°00'49.2"N 128°43'04.7"E
	MAPt(LOC only) BRG 329.52° / 1.00NM IYAN	38°02'29.7"N 128°41'22.0"E
	THR RWY33	38°03'09.21"N 128°40'41.25"E
	IYAN DME	38°03'13.8"N 128°40'30.0"E
	D2 YAG R 329 YAG/2.00NM YAG	38°05'28.5"N 128°38'18.8"E
	DOWON R 090 YAG/10.00NM YAG	38°05'14.5"N 128°52'13.8"E

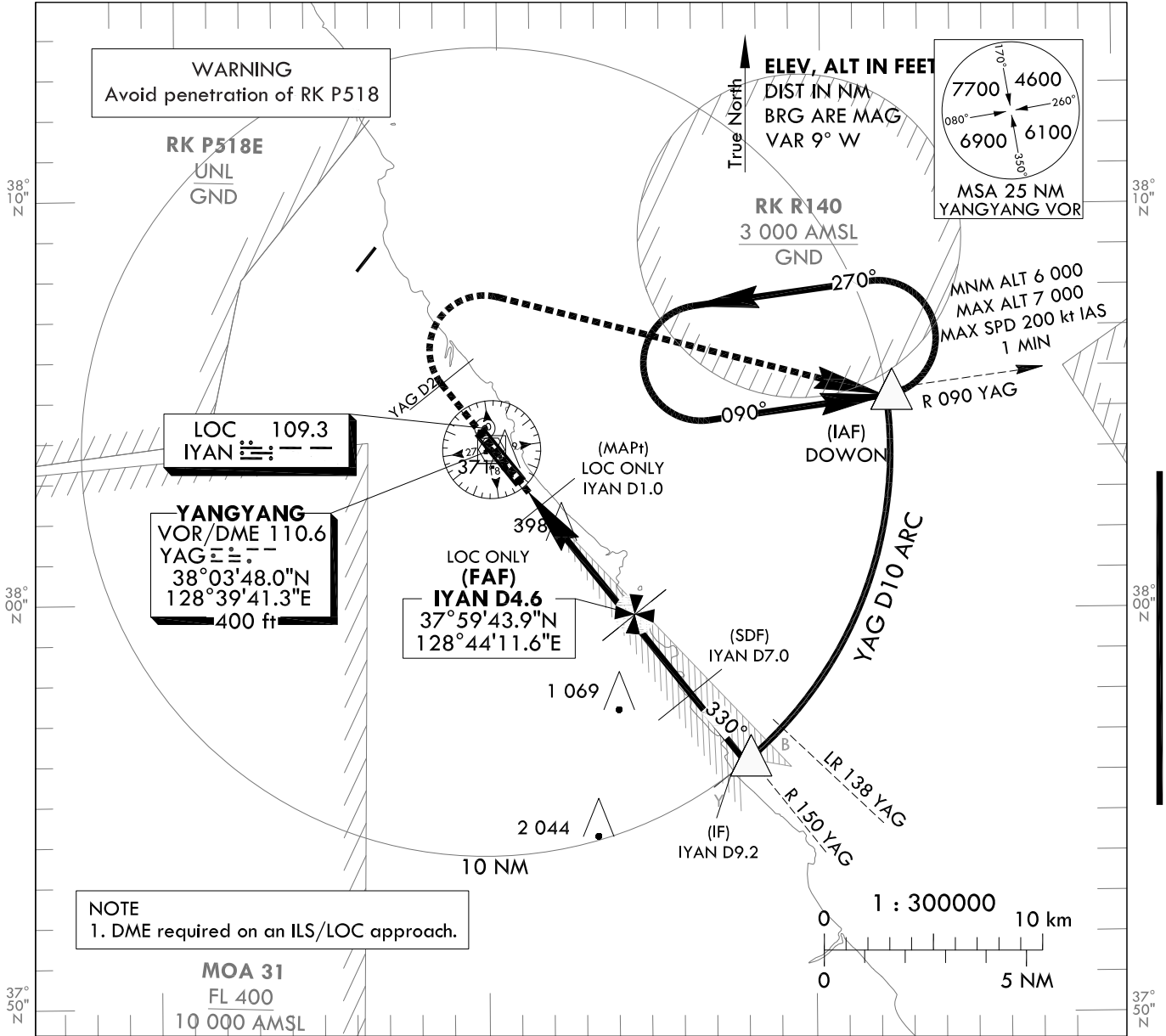
**INSTRUMENT
APPROACH
CHART - ICAO**

AERODROME ELEV 241 ft
HEIGHTS RELATED TO
THR RWY 33 - ELEV 227 ft

GANGNEUNG APP 124.6
YANGYANG TWR 118.85
124.375

YANGYANG/IntI(RKNY)
ILS Y or LOC Y RWY 33

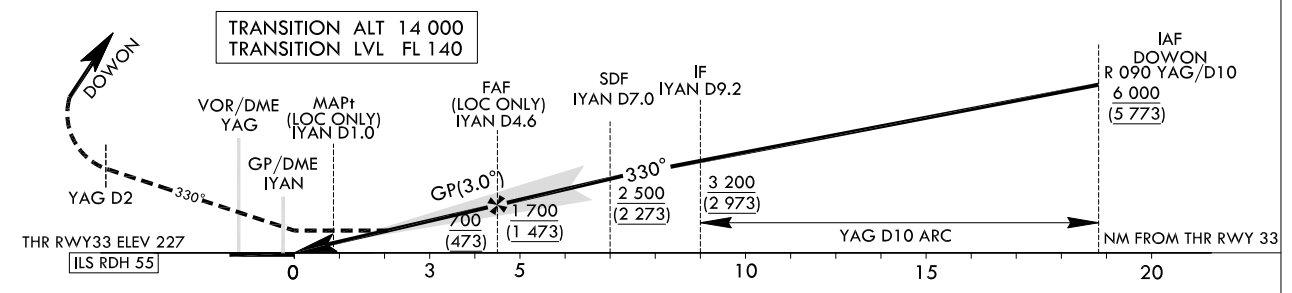
Note : Approach and circle-to-land under ICAO Flight Procedures.



NOTE
1. DME required on an ILS/LOC approach.

RECOMMENDED PROFILE(LOC ONLY)	DME YAG	4	3	2	1.4
Final Approach Gradient 5.32%, 324 ft/NM	ALT(HGTT)	1 526 (1 300)	1 203 (976)	879 (653)	658 (459)

MISSED APPROACH
Climb straight ahead until YAG D2, then turn right to DOWON and hold at 6 000 ft. Hold as published.



CATEGORY	DA(H)/MDA(H)	RVR				Rate of descent	Knots					
		A	B	C	D		60	90	120	150	180	
STA	CAT 1	FULL	RVR 550 m, VIS 800 m				V/v fpm	318	478	637	796	955
		ALS INOP	427 (200)	1 200 m								
STA	LOC	FULL	1 500 m				* Timing Not authorized for defining MAPt. * Circling Not authorized west of RWY 15-33, area on between R 150 and R 315 YAG and area beyond 6 DME of between R 315 and R 360 YAG.					
		ALS INOP	700 (473)	2 200 m								
Circling			700(460) 2 400 m	740(500) 2 800 m	1 160(920) 4 300 m	1 180(940) 4 600 m						

Change : Amended ILS plan view symbol.

YANGYANG/Intl(RKNY)

ILS Y or LOC Y RWY 33

AERONAUTICAL DATA TABULATION

ILS/LOC Y Approach to RWY 33 from DOWON		
	Fix/Point	Coordinates
	DOWON(IAF)	38°05'14.5"N 128°52'13.8"E
	9.2D IYAN(IF) BRG 329.54° / 9.16 NM IYAN	37°56'08.9"N 128°47'51.2"E
	7.0D IYAN(SDF) BRG 329.54° / 7.00 NM IYAN	37°57'49.6"N 128°46'08.4"E
	4.6D IYAN(FAF) BRG 329.54° / 4.55 NM IYAN	37°59'44.0"N 128°44'11.6"E
	MAPt(LOC only) BRG 329.54° / 1.00 NM IYAN	38°02'29.7"N 128°41'22.0"E
	THR RWY33	38°03'09.21"N 128°40'41.25"E
	IYAN DME	38°03'13.8"N 128°40'30.0"E
	D2 YAG R 330 YAG/ 2.00 NM YAG	38°05'28.5"N 128°38'18.6"E
	DOWON R 090 YAG/ 10.00 NM YAG	38°05'14.5"N 128°52'13.8"E

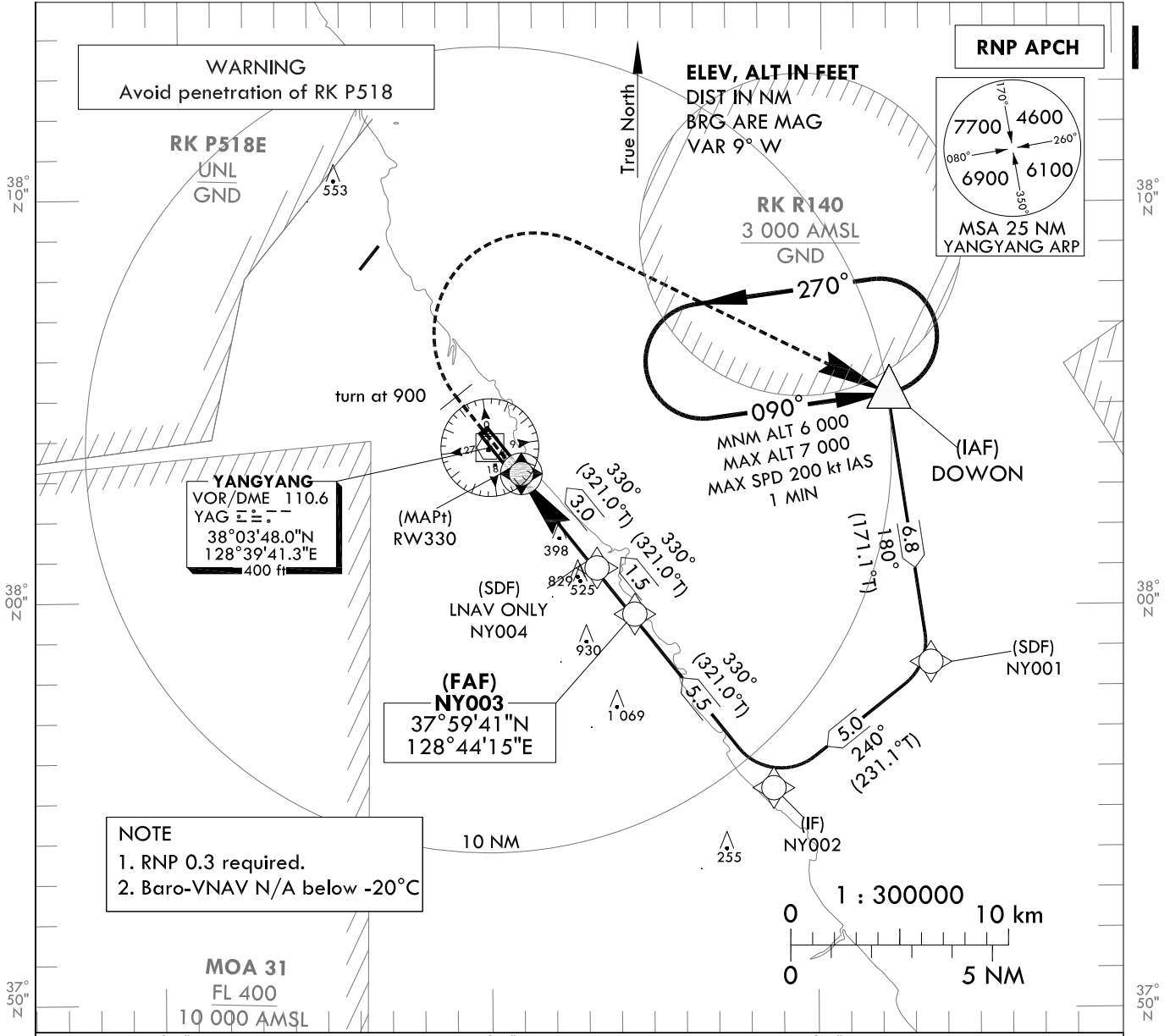
**INSTRUMENT
APPROACH
CHART - ICAO**

AERODROME ELEV 241 ft
HEIGHTS RELATED TO
THR RWY 33 - ELEV **227 ft**

GANGNEUNG APP 124.6
YANGYANG TWR 118.85
124.375

YANGYANG/InI(RKNY)
RNP RWY 33

Note : Approach and circle-to-land under ICAO Flight Procedures.

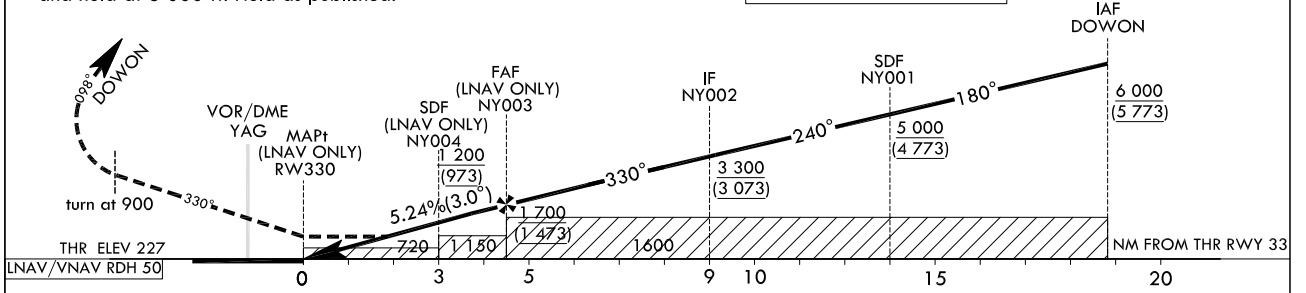


NOTE
1. RNP 0.3 required.
2. Baro-VNAV N/A below -20°C

MISSED APPROACH

Climb on HDG 329° to 900 ft, then turn right to DOWON and hold at 6 000 ft. Hold as published.

TRANSITION ALT 14 000
TRANSITION LVL FL 140



CATEGORY		DA(H)/MDA(H)	A	B	C	D	Knots							
STA	LNNAV/ VNAV	FULL	640 (413)	1 200 m				Rate of descent	V/V fpm	318	478	637	796	955
		ALS INOP	720 (493)	1 900 m										
	LNNAV	FULL	720 (493)	1 500 m										
		ALS INOP		2 300 m										
Circling			720(480) 2 200 m	740(500) 2 800 m	1 160(920) 4 300 m	1 180(940) 4 600 m	* Timing Not authorized for defining MAPI. * Circling Not authorized west of RWY 15-33, area on between R 150 and R 315 YAG and area beyond 6 DME of between R 315 and R 360 YAG.							

Change : Amended procedure name(RNAV(GNSS) → RNP).

AERONAUTICAL DATA TABULATION

Instrument Approach Procedure Coding Tables

RNP RWY 33 - via DOWON(IAF)

Serial Number	Path Descriptor	Waypoint Identifier	Fly-over	Course/Track °M(°T)	Distance (NM)	Turn direction	Altitude (ft)	Speed (kt)	Coordinates	VPA/ TCH*	Navigation specification	Remarks
001	IF	DOWON	-	-	-	-	+6 000	-	38°05'14.5"N 128°52'13.8"E	-	RNP APCH	IAF
002	TF	NY001	-	180(171.1)	6.8	-	+5 000	-	37°58'31.2"N 128°53'33.6"E	-	RNP APCH	SDF
003	TF	NY002	-	240(231.1)	5.0	-	+3 300	-	37°55'22.3"N 128°48'38.8"E	-	RNP APCH	IF
004	TF	NY003	-	330(321.0)	5.5	-	+1 700	-	37°59'40.6"N 128°44'14.9"E	-	RNP APCH	FAF
005	TF	NY004	-	330(321.0)	1.5	-	+1 200	-	38°00'49.2"N 128°43'04.7"E	-	RNP APCH	SDF
006	TF	RW330	Y	330(321.0)	3.0	-	+720	-	38°03'09.21"N 128°40'41.25"E	-3,00/50	RNP APCH	MAPt
007	VA	ALT	Y	330(321.0)	-	R	+900	-	-	-	RNP APCH	-
008	DF	DOWON	Y	-	-	L	@6 000	-200	38°05'14.5"N 128°52'13.8"E	-	RNP APCH	MAHF

HOLDING PROCEDURE

Holding Identification	Path Descriptor	Waypoint Identifier	Fly-over	Course/Track °M(°T)	Turn direction	Altitude (ft)	Speed (kt)	Coordinates	VPA/ TCH*	Navigation specification	Remarks
RNP RWY 33	HM	DOWON	Y	090(081.4)	L	+6 000	-200	38°05'14.5"N 128°52'13.8"E	-	RNAV 1	1 Min (Outbound Leg)

* The term TCH equates to the use of the term RDH, within this context of the FAS data block.

Change : Amended procedure name(RNAV(GNSS) → RNP).

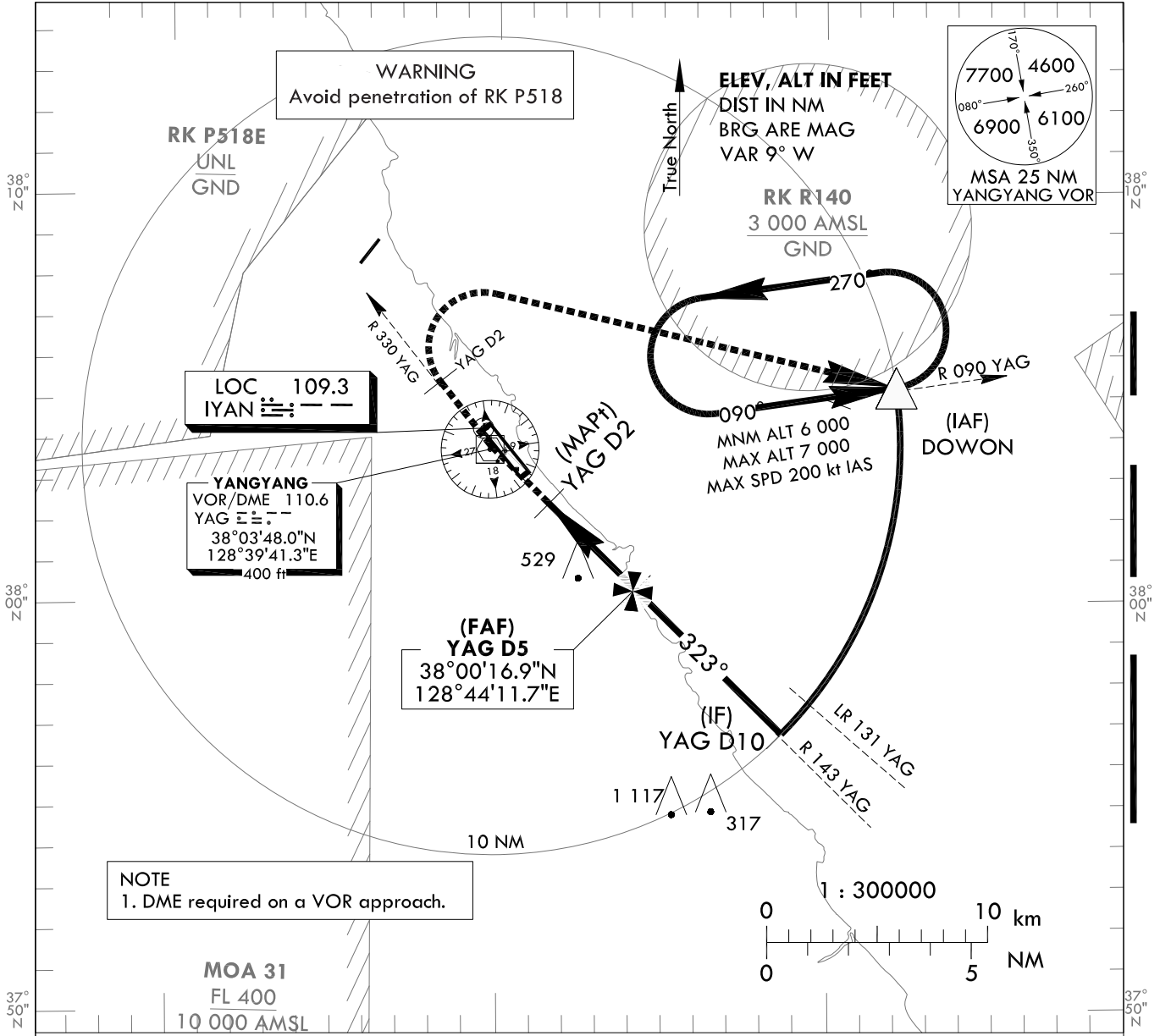
**INSTRUMENT
APPROACH
CHART - ICAO**

AERODROME ELEV 241 ft
HEIGHTS RELATED TO
THR RWY 33 - ELEV **227 ft**

GANGNEUNG APP 124.6
YANGYANG TWR 118.85
124.375

YANGYANG/IntI(RKNY)
VOR RWY 33

Note : Approach and circle-to-land under ICAO Flight Procedures.

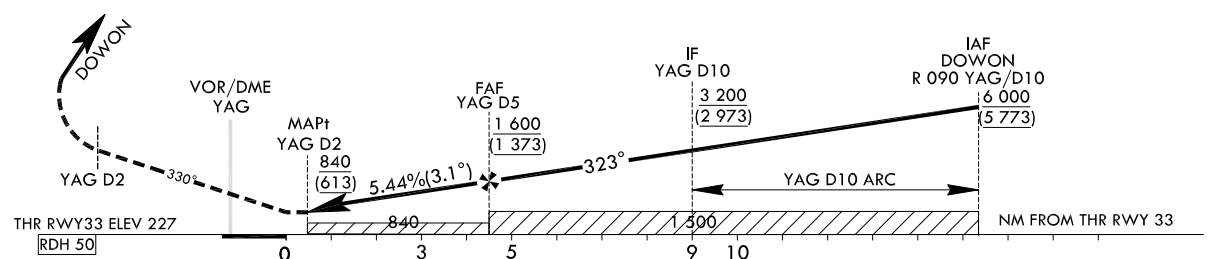


NOTE
1. DME required on a VOR approach.

RECOMMENDED PROFILE	DME YAG	5	4	3	2
Final Approach Gradient 5.44%, 330 ft/NM	ALT(HGT)	1 600 (1 373)	1 268 (1 043)	940 (713)	840 (613)

MISSED APPROACH
Climb on R 330 YAG until 2DME, then turn right to DOWON and hold at 6 000 ft. Hold as published.

TRANSITION ALT 14 000
TRANSITION LVL FL 140



CATEGORY		MDA(H)	A	B	C	D	Rate of descent V/v fpm	Knots 60 90 120 150 180
STA	FULL ALS INOP	840 (613)	2 100 m 2 800 m					
Circling			840(600) 2 700 m	840(600) 2 800 m	1 160(920) 4 300 m	1 180(940) 4 600 m	* Timing Not authorized for defining MAPt. * Circling Not authorized west of RWY 15-33, area on between R 150 and R 315 YAG and area beyond 6 DME of between R 315 and R 360 YAG.	

Change : Amended coordinate and radial format.

YANGYANG/Intl(RKNY)

VOR RWY 33

AERONAUTICAL DATA TABULATION

VOR Approach to RWY 33 from DOWON		
	Fix/Point	Coordinates
	DOWON(IAF)	38°05'14.5"N 128°52'13.8"E
10.0D	YAG(IF) BRG 323.00°/10.00 NM YAG	37°56'45.5"N 128°48'41.3"E
5.0D	YAG(FAF) BRG 323.00°/5.00 NM YAG	38°00'16.9"N 128°44'11.7"E
2.0D	YAG(MAPt) BRG 323.00°/2.00 NM YAG	38°02'23.5"N 128°41'29.9"E
THR	RWY33 Final Approach Descent Angle 3.11°	38°03'09.21"N 128°40'41.25"E
	YAG VOR/DME	38°03'48.0"N 128°39'41.3"E
D2	YAG R 330 YAG/2.00 NM	38°05'22.3"N 128°38'07.6"E
	DOWON R 090 YAG/10.00 NM	38°05'14.5"N 128°52'13.8"E